
Table of Contents

Table of Contents	2
1 Liability Limitation	3
2 Active Stereo	4
2.1 Firmware Update	4
2.2 3D Video formats support.	4

1 Liability Limitation

In no event shall the author be liable for damages, including any general, special, incidental or consequential damages arising out of the use or inability to use the program, including but not limited to loss of data or losses sustained by you or third parties or a failure of the program to operate with any other programs, even if such holder or other party had previously been advised of the possibility of such damages. This software is provided "as-is". No warranty of any kind is expressed or implied.

By installing the software you accept the end user license agreement and liability limitations.

2 Active Stereo

2.1 Firmware Update

In order to support active stereo please ensure that you have correct firmware.

Active stereo support starts from following versions:

SXGA_M2_42_BINO_HDMI#68:: Ver.1.04

Display engine:: Ver.1.03

2.2 3D Video formats support.

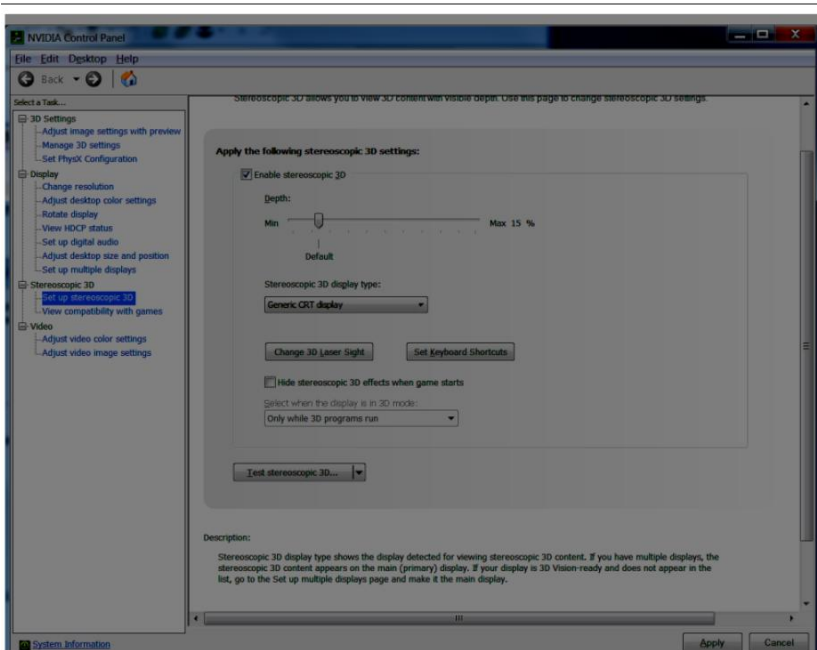
At the moment we support 2 formats of 3D Video:

- Custom side by side 2560x1024@60Hz, HMD displays 1280x1024 on each ocular.

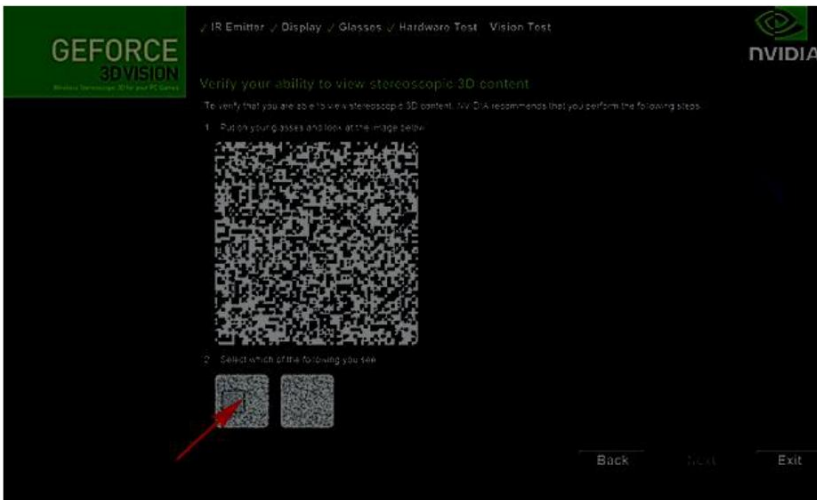
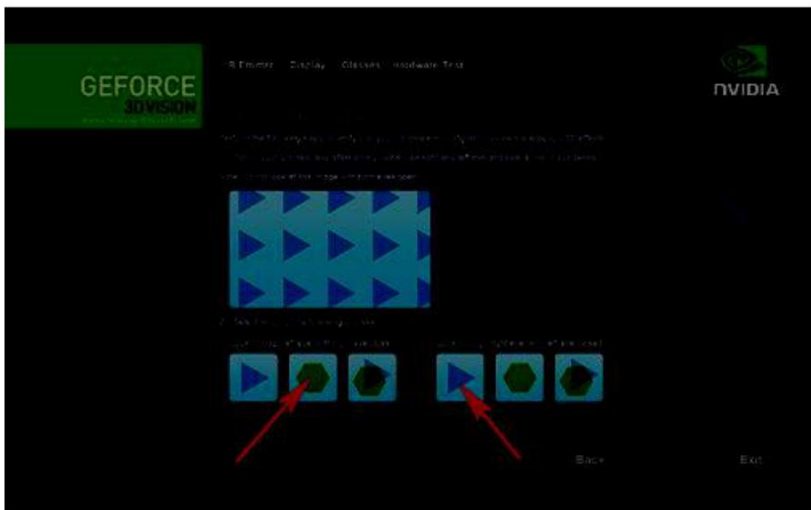
This mode is mostly dedicated to developers, no Additional 3D driver needed. Also no need to switch HMD as Primary display.

- Standard HDMI 3D frame packed 1280x720@60Hz
3D driver is needed such as from nVidia.
For authorization purpose you need to purchase
NVIDIA NVIDIA 3D Vision 2 Wireless Glasses Kit
<http://www.newegg.com/Product/Product.aspx?Item=N82E16814998061>
Just plug USB IR emitter.

Open nVidia Control Panel.
Go to Stereoscopic 3D folder.



Then check the box Enable stereoscopic 3D ,you'll be run through Setup Wizard.



Once it's done you can run nVidia stereoscopic 3D test.

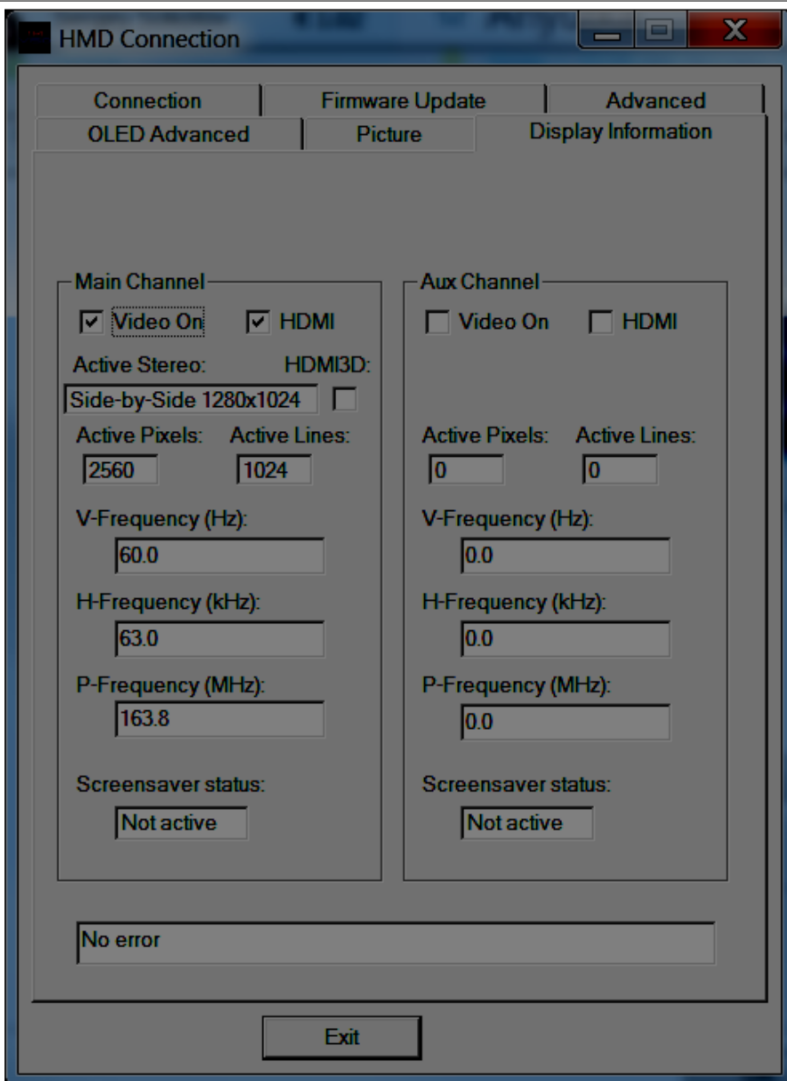
Always refer to Display Information Tab of HMD Connection software

to get info of current running mode.

http://www.trivisio.com/modules/download_gallery/dlc.php?file=35&id=1427873447

Below are pictures of Display Information for 3D modes described above:

Custom side by side 2560x1024@60Hz



Standard HDMI 3D frame packed 1280x720@60Hz

